



JUNYUAN PRIMARY SCHOOL

Future-Ready Learners . Leaders of Character

Mathematics

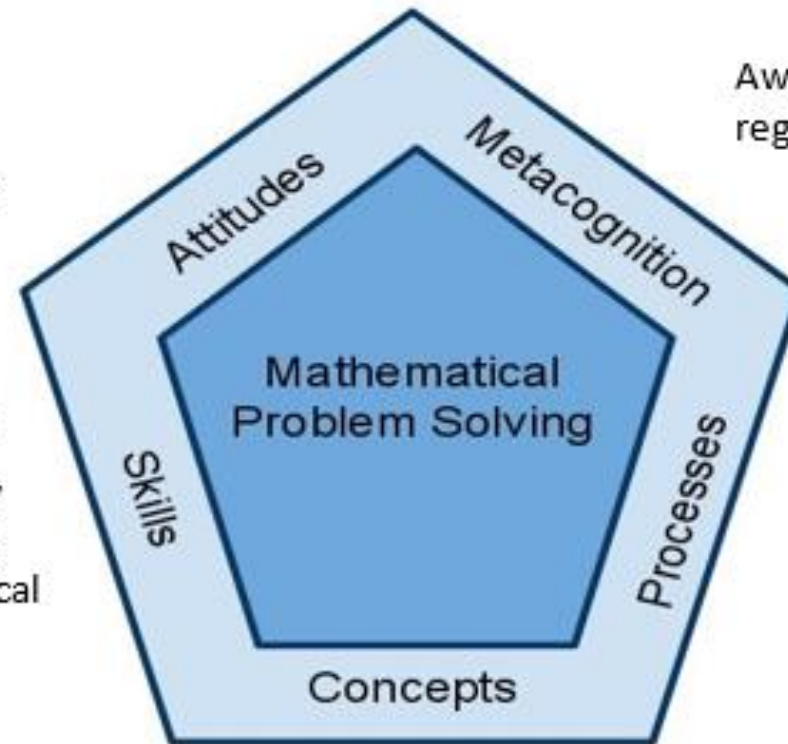
Primary 6



Mathematics Curriculum Framework

Belief, appreciation,
confidence, motivation,
interest and perseverance

Proficiency in carrying out
operations and algorithms,
visualising space, handling
data and using mathematical
tools



Awareness, monitoring and
regulation of thought processes

Competencies in abstracting
and reasoning, representing
and communicating,
applying and modelling

Understanding of the properties and
relationships, operations and
algorithms



Topics at P6 MA

Fractions
Ratio
Percentage
Angles in Geometrical Figures
Circles
Volume of Cube and Cuboid
Average
Algebra

Topics at P6 FMA

Fractions
Decimals
Percentage
Average
Volume
Pie Chart
Area of Triangle
Properties of Triangles
Angles in Triangles, Squares and Rectangles



Key Department Approaches & Programmes

- **Sustained Support for Maths (SSM)**
- **Factual Fluency**
- **Note Taking**
- **STAR Heuristics Package (STAR Hpack)**
- **Enrichment (For selected students only)**
 - **Mathematics Olympiad Training (Semester 1)**
 - **Math Alive!**



Sustained Support for Maths (SSM)

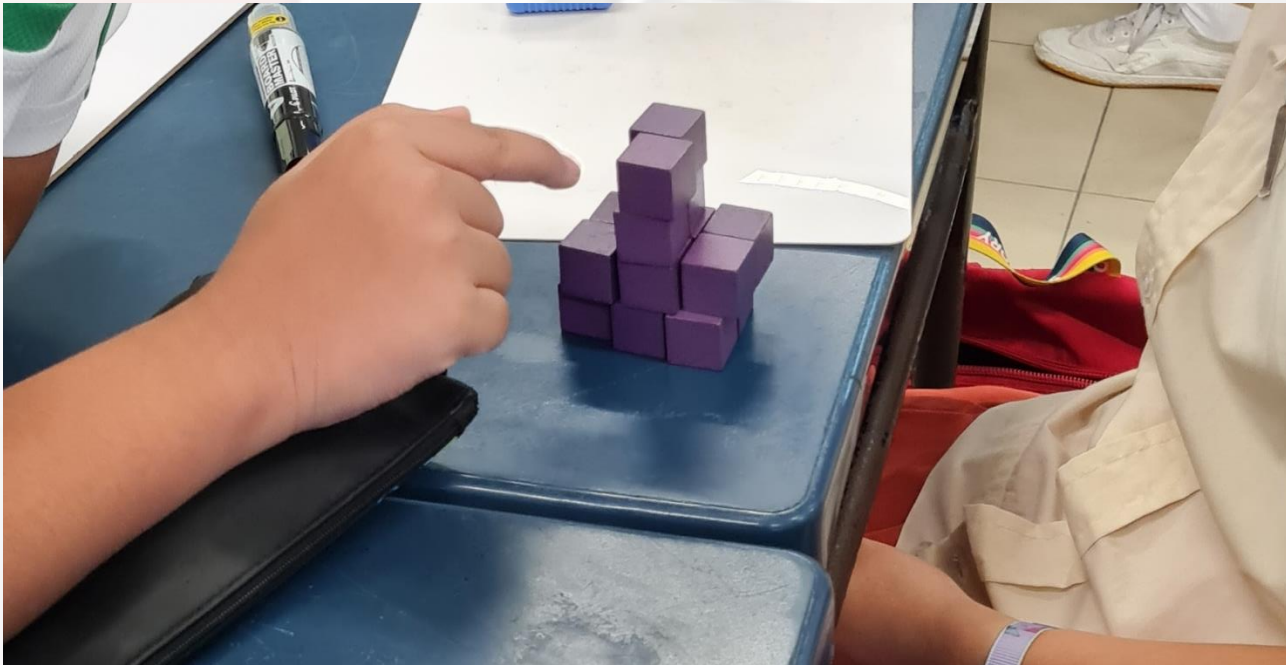
Activity - based lessons





Sustained Support for Maths (SSM)

Activity - based lessons





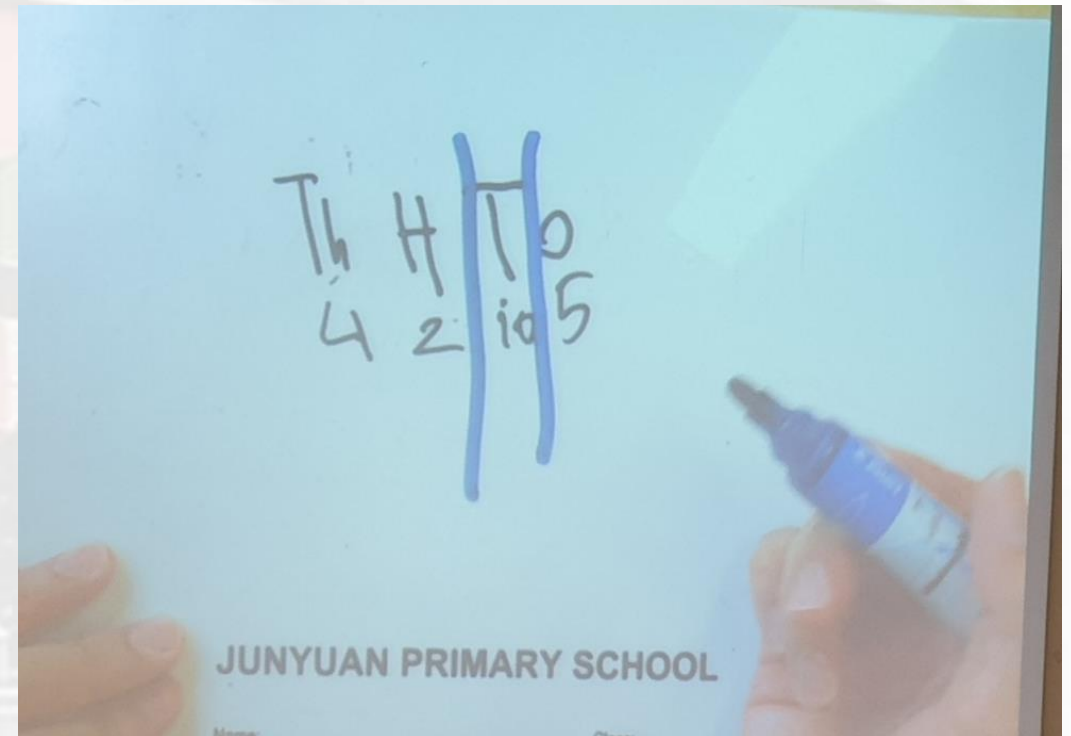
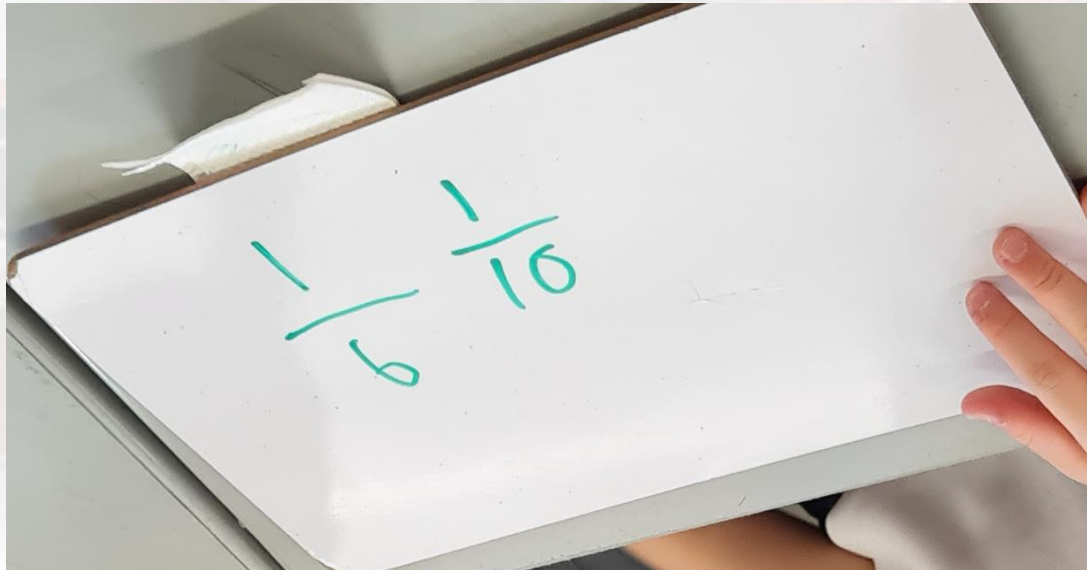
Sustained Support for Maths (SSM)

Factual Fluency

Simplify the expression



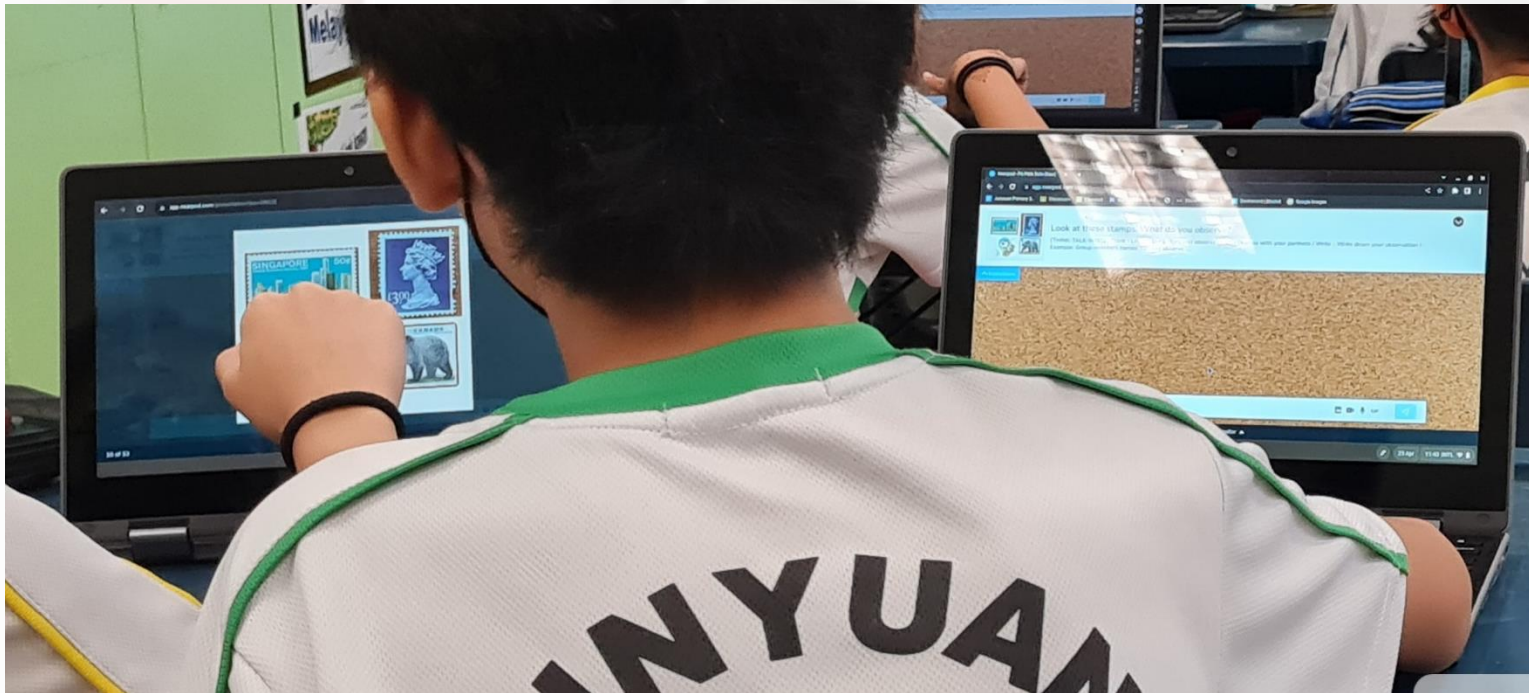
$$20p + 7 - 13p - 5$$





Sustained Support for Maths (SSM)

ICT - based lessons





KooBits | Love Learning 

Enter your Login ID

Enter your password

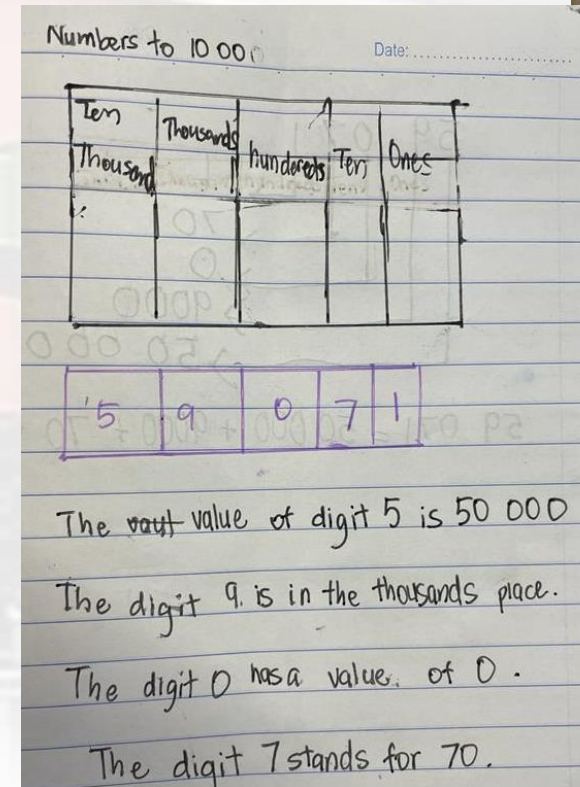
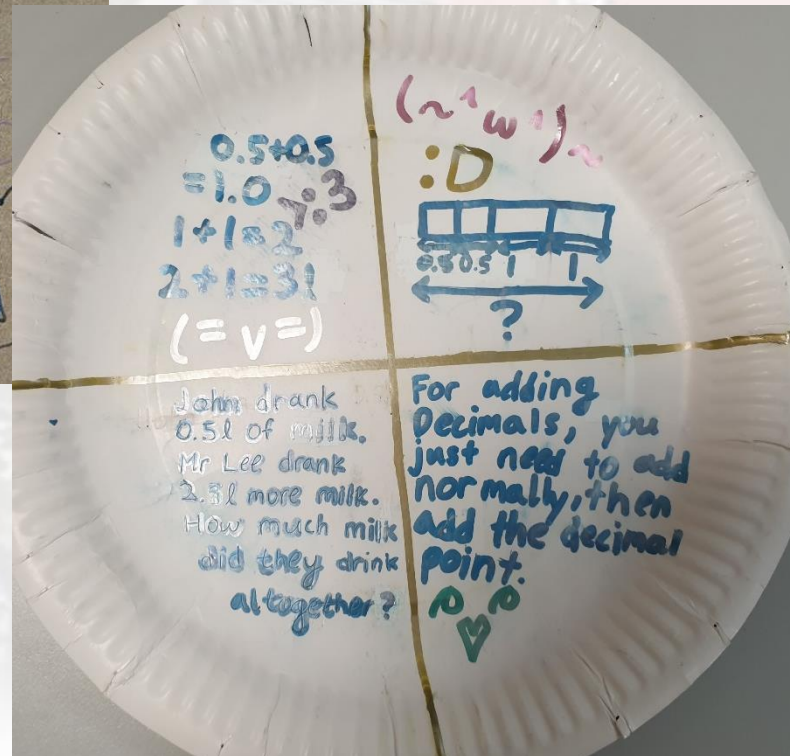
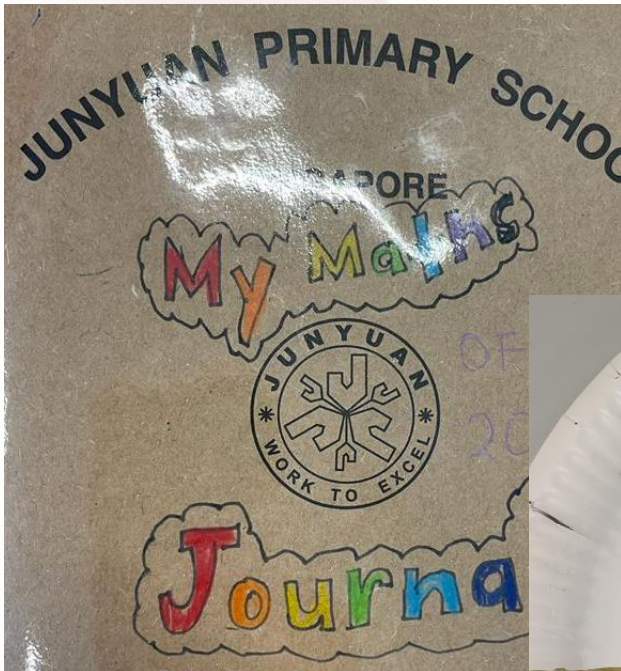
☐ Show

[Need Help?](#)

Login



Note Taking





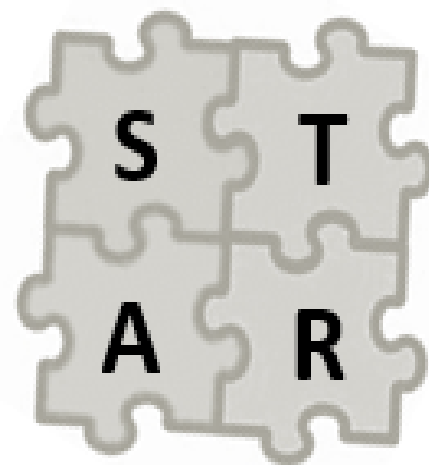
STAR Heuristics Package (STAR Hpack)

JUNYUAN PRIMARY SCHOOL
MATHEMATICS

STAR

SEE ~ THINK ~ ACT ~ RELOOK

P6





STAR

Approach in Problem Solving



A



See what is given



Think of a plan



Act on my plan



Relook and check



Examples of Heuristics

- **Model Drawing**
e.g. Fractions of a remainder
- **Patterning**
- **Mixed Heuristics**



Assessment

Non weighted Assessments (NWA)

Preliminary Examination (Prelims)

Format of NWA (Standard)



Section	Item Type	Number of Questions	Allocation of Marks per Question	Duration
A	MCQ	6	2	50 min
B	SAQ	10	2	
C	LAQ	2	4	

Format of NWAs(Foundation)



Section	Item Type	Number of Questions	Allocation of Marks per Question	Duration
A	MCQ	7	1 – 2	50 min
B	SAQ	8	1 – 2	
C	LAQ	2	3 or 4	



Format of Prelims / PSLE (Standard)

Paper	Booklet	Item Type	No. of qns	Marks per qns	Weighting	Duration
1	A	MCQ	10	1	10%	1h 10 min
			8	2	16%	
	B	SAQ	12	2	24%	
2		SAQ	5	2	10%	1h 20 min
		LAQ	10	3 to 5	40%	
Total			45		100%	2h 30 min



Format of Prelims / PSLE (Foundation)

Paper	Booklet	Item Type	No. of qns	Marks per qns	Marks	Duration
1	A	MCQ	10	1	10	1h
			10	2	20	
	B	SAQ	8	2	16	
2		SAQ	10	2	20	45 min
		LAQ	4	3 to 4	14	
Total			42		80	1h 45 min



Supporting our Students

- Relate Maths to daily life.
- Encourage active engagement in school's online platforms e.g. Koobits, SLS
- Encourage your child to ask questions and not to be afraid to try.
- Refer to textbooks / Mathematics Handbook (Orange file) / own notes taken during lessons



Online Maths Alive! Workshop for parents (via MS Teams)

Save the date!

17 April 2026

Details will be sent via PG nearer
the date



*Thank
You!*